



INSTALLATION GUIDE

ISNORKELO15

NISSAN PATROL GU Series 1,2 & 3
RD28ETi, TB45E, TD42T & TD42Ti, ZD30(DDTi)



- Ironman 4x4 Snorkel fits to the left hand side of the Nissan Patrol GU.
- It will take about 3 hours to install.
- Below is a list of some required tools for installing your Ironman 4x4 Snorkel:
 - **Hole Saw (95mm)**
 - **Step Drill**
 - **Air Hacksaw**

Parts will be left over after installation depending on model.

NOTE: Only use "sensor safe" sealant during installation

IMPORTANT: Snorkel installations should only be done by a qualified person and it is the responsibility of this person to ensure correct fitment and to ensure the installation is water tight.

1. Before installation check snorkel application is compatible with your vehicle.

2. Remove left hand front mud guard liner, left hand front indicator assembly and radio aerial.



RD28TEi / TD42T

3. Remove air cleaner.

TB45E

- A. Remove air cleaner intake duct and carbon canister.

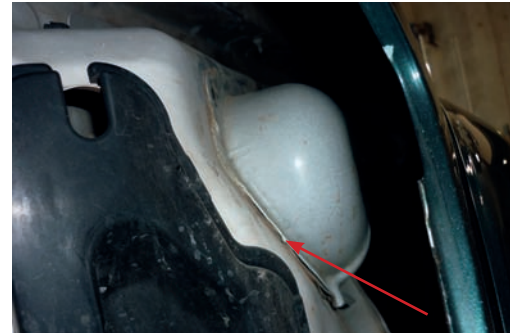


ZD30(DDTi) / TD42Ti

- B. Remove air cleaner assembly and air cleaner intake duct.



NOTE: To remove air cleaner intake duct from between inner and outer mud guards, remove five 6mm bolts and lever away from inner guard to break adhesive.



ALL MODELS

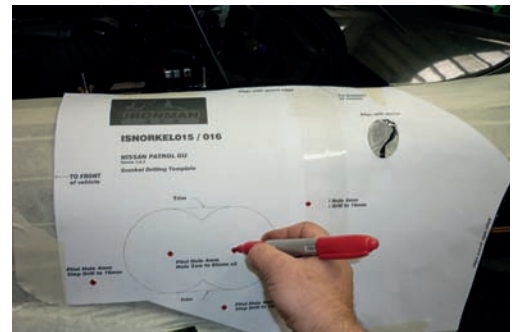
4. Apply masking tape to left hand front mud guard and windscreen pillar.

5. Tape template to mud guard making sure it is lined up with top of mud guard (bonnet opening) and rear of mud guard (door opening).



6. Using a felt tipped pen, mark all holes through template onto mud guard.

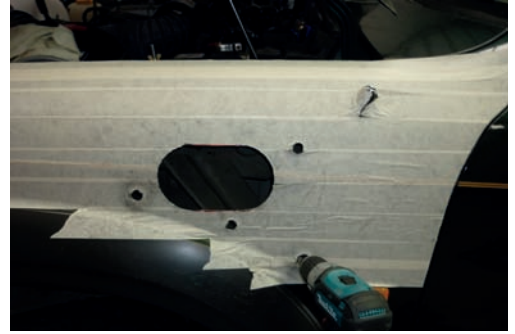
Remove template.



7. Using a 95mm hole saw, cut two semi circles as shown. Mark straight lines between the top and bottom of the semi circles and cut along using an air hack saw.



8. Drill mounting holes to 16mm.



9. Deburr and rust-proof all holes (This applies to all holes drilled after this step).

10. Using thred-lock, screw all studs into snorkel body and attach pillar mounting bracket to snorkel using M6 bolts provided.

11. Hold snorkel body in position, mark three holes through mounting bracket onto windscreen pillar. Remove snorkel and drill holes to 7.5mm.



12. Apply silicone sealant to holes and insert mounting plugs.



TB45E / RD28TEi / TD42T

13. From engine bay using a 95mm hole saw, cut internal panel through air entry hole for air cleaner.

When cutting this hole a piece of timber must be placed between mud guard and internal panel to prevent damage to mud guard.



ALL MODELS

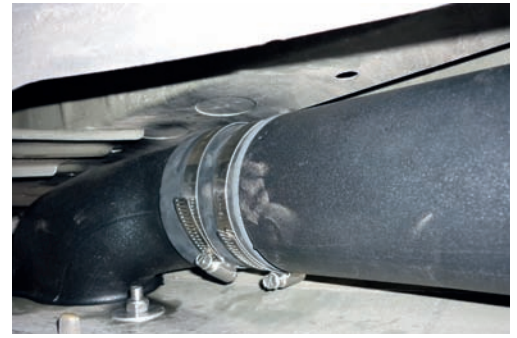
14. Install snorkel body to vehicle using M8 Nyloc nuts and body washers provided and secure pillar mounting bracket to pillar using self tapping screws provided.



15. Slide connecting hose onto end of air entry duct with two hose clamps.



16. Attach air entry duct to snorkel outlet and secure with hose clamps.



TB45E

17. Using template supplied, mark and drill two mounting holes to 6.5mm on mounting flange of connecting elbow as shown.



- A. Fit elbow from engine bay through inner guard and connect to air entry duct with connecting hose and hose clamps.

Note: Trim insulation to allow elbow to seat against inner guard.



- B. Remove plastic clip from mounting flange of factory air intake duct and drill hole out to 8mm.



- C. Apply a liberal bead of silicone sealant to face of mounting flange and inside of air cleaner end of duct.



Secure duct to elbow using factory bolts and to air cleaner using hose clamp.



RD28TEi / TD42T

17. Fit elbow from engine bay through inner guard and secure to connecting duct using joiner hose and hose clamps provided.



- A. Remove foam seal from air cleaner inlet.



- B. Apply a liberal bead of silicone to air cleaner flange.



- C. Refit air cleaner, make sure it seals against elbow flange.



ZD30(DDTi) / TD42Ti

17. Fit elbow from engine bay through inner guard and secure to connecting duct using rubber joiner and hose clamps provided.

Secure elbow flange to inner guard using 6mm bolts.

NOTE: Trim insulation to allow elbow to seat against inner guard.



- A. Drill three air cleaner mounting holes out to 11mm.



B. Remove foam seal from air cleaner inlet.



C. Apply a liberal bead of silicone to elbow flange.



D. Refit air cleaner making sure it seals against elbow flange.



ALL MODELS

18. Check all hose connections for potential leaks and seal as required.

19. Reinstall aerial, guard liner and indicator assembly.

20. Fit Ironman 4x4 air ram and secure with hose clamp provided.

